

## iGO8 Quick Guide

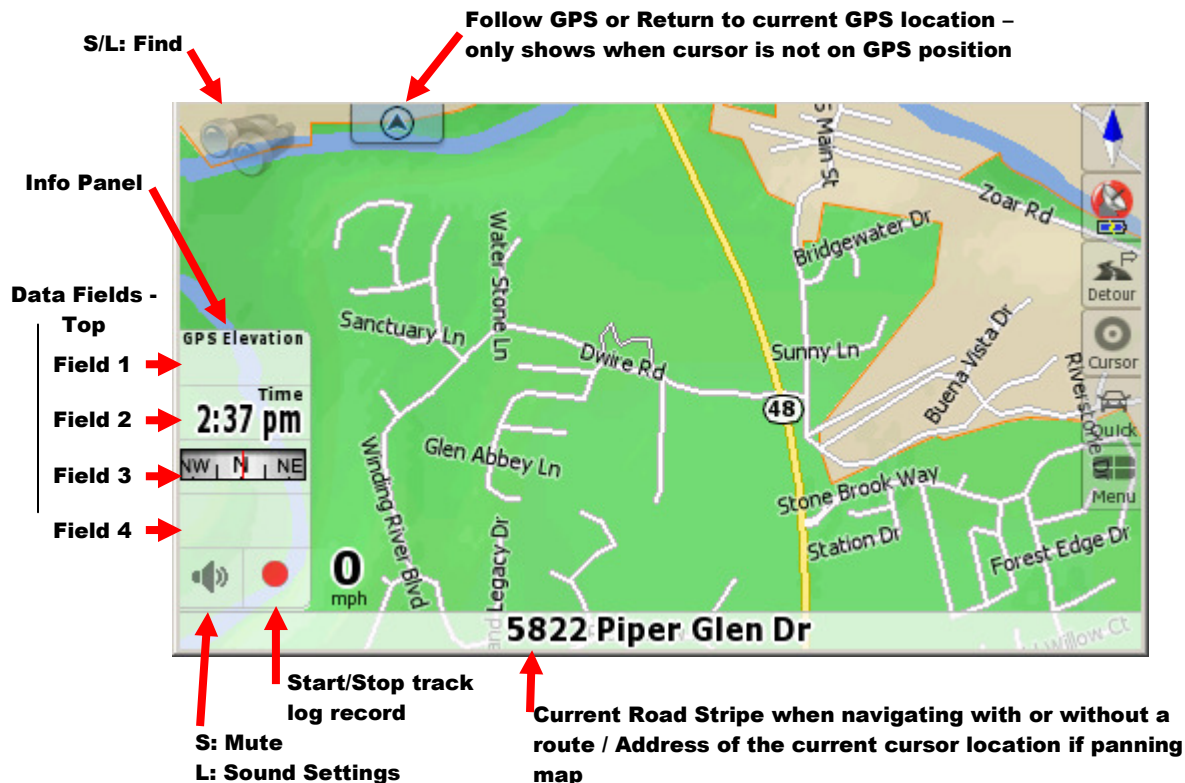
iGO 8.2.3.6XXX with dimka 1.1.9/1.1.9a Skin (as modified by megaduck99 and specter)

### Notes:

- S: - Short Click or Tap
- L: - Long Click or hold it until something happens
- S/L: - Short or long do the same thing – on some icons, long will tell you what the function is
- iGO8 is running at 480x272 resolution on a Mio C320 (Screenshots)
- Tap and Click mean the same thing
- Read the real iGO8 user manual to fill in the blanks – like tilt, pan, preset zooms, managing poi....
- There are two screens – Cockpit and Map. Cockpit is what you see while driving and the map screen is used for viewing the map and planning a route.
- The “Position” button remains undefined – just because I have not used it yet
- Many of the screens assume you have found an address or POI via “Find” screen or have panned the map and clicked a location
- Buttons are explained on various pages – if the button icon is the same as another screen it does the same thing

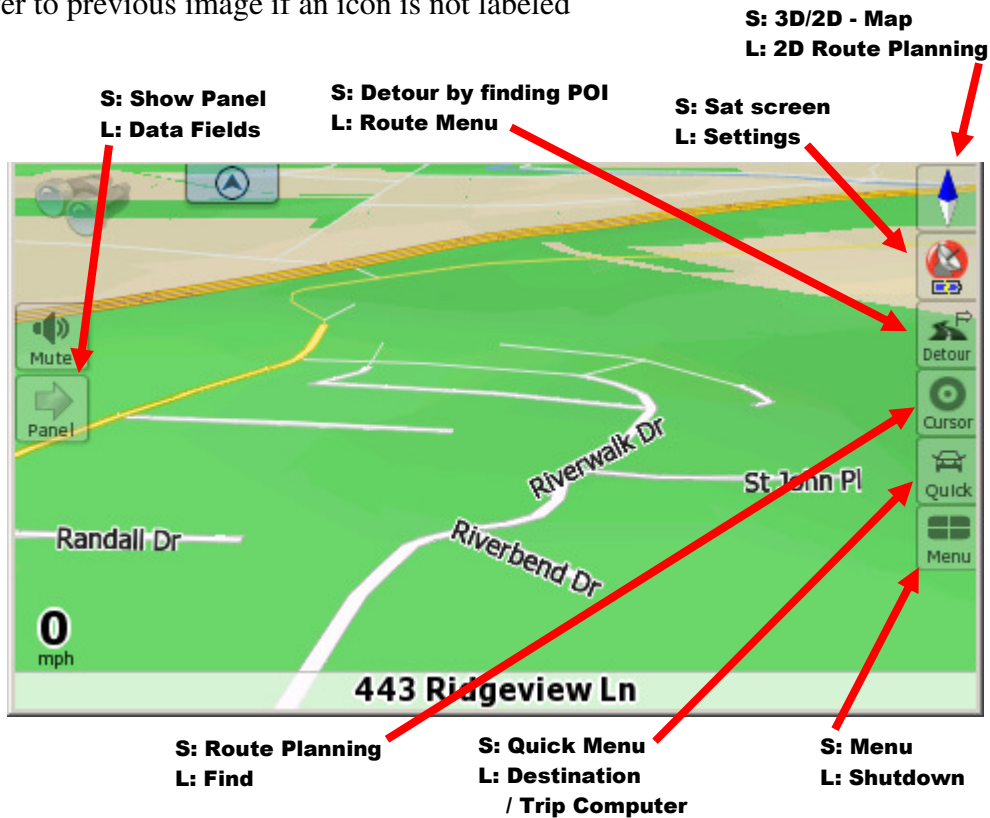
### Cockpit Screen

- Tap Info panel to minimize it
- Data Fields are customizable – Fields shown on cockpit screen while not on a route will show from the “Data Fields – Top Menu” screen – which is screen 1 of 2.
- You can pan the map in cockpit mode at any time.
- Clicking on the a map will place the cursor and bring up map tools (Pan, Tilt, Zoom)
  - Selecting the Cursor icon will bring up route planning tools (See map screen below)



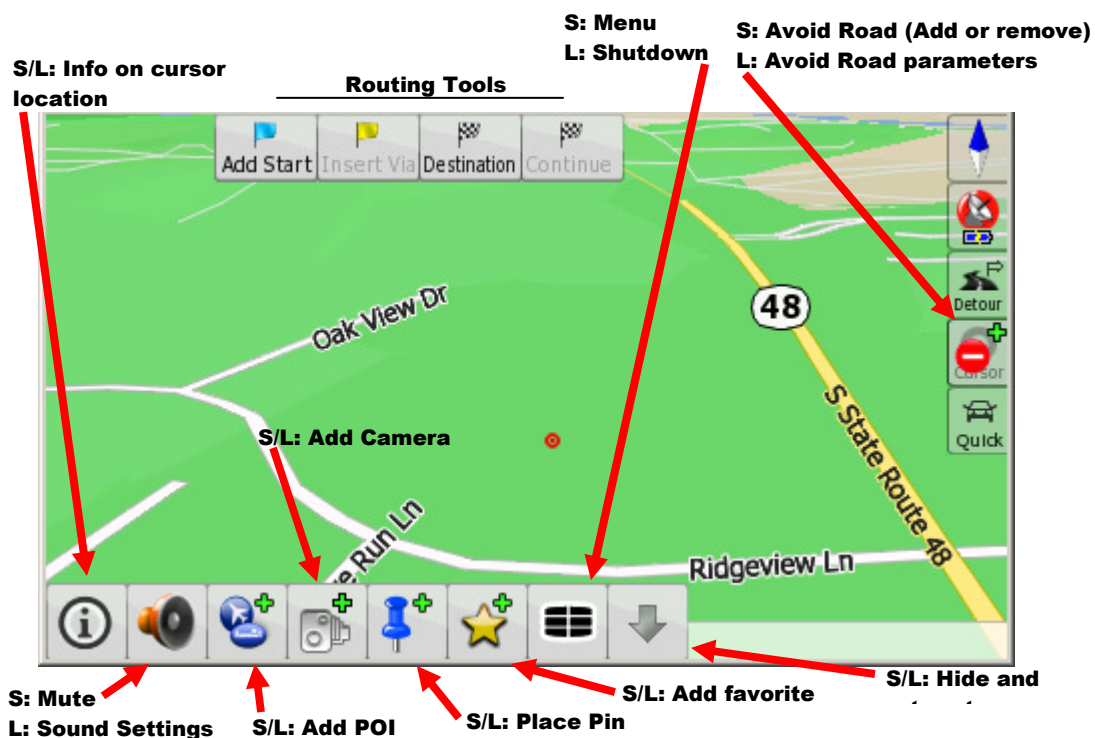
## Cockpit Screen – cond.

- This screen shows the “Info Panel” removed. Panel is removed by clicking on it
- Refer to previous image if an icon is not labeled



## Route Planning / Map Screen

- From the 3D Cockpit screen Click “Cursor” icon to see the screen below



**Route Planning / Map Screen – cond.**

- From the 3D Cockpit screen LONG CLICK "North Arrow" icon to see this screen
  - More route planning options
    - Can set vehicle type and route type
    - If route exists, can and compare all routes on screen
  - Panning / Tilting / Zooming buttons – long click or hold moves map continuously



**Vehicle Type –**  
S: Vehicle Type Screen  
L: Toggle ped / car

**Route Type –**  
Clicking has same effect as vehicle type

**Distance / Time –**  
S: Route Type Checkbox (Select All to see all routes)  
L: Toggle Route Type

**S: 2D/3D**  
**L: Aerial View**

**S/L: Route Screen**

**S/L: Itinerary**

**S/L: Edit route points**

**S/L: Show/Hide info**

**S: Menu**  
**L: Shutdown**

**Show full route**

**Zoom in**

**Zoom out**

**Tilt right**

**Tilt left**

**Find**

**"Target"**

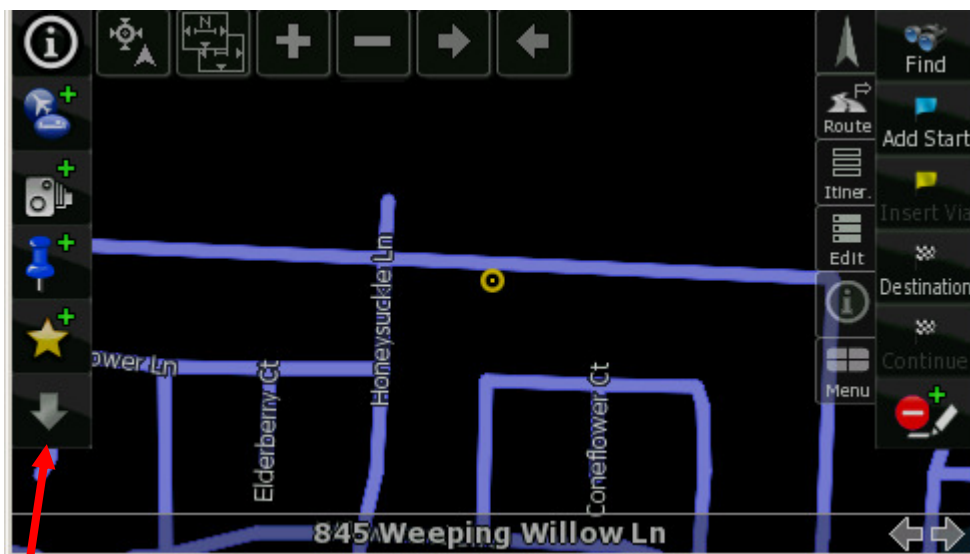
**Move Cursor to GPS?**

**S: Zoom really close**  
**L: Default Zoom**

**S: Zoom way out**  
**S: Zoom Medium**

**S/L: Show/Hide icons**

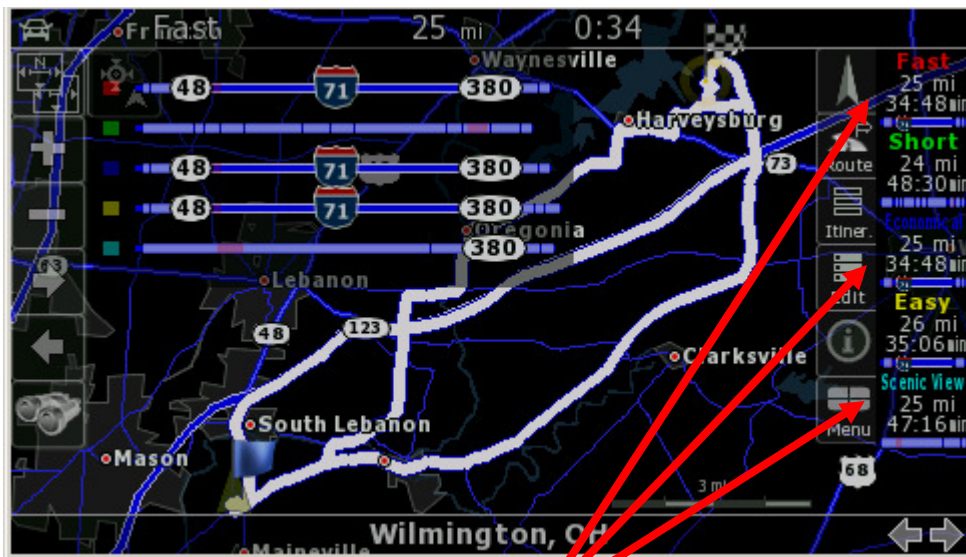
- Click "Target" from the screen above to see the screen below – icons should look familiar. All are listed in other parts of the manual. This screen adds POI, Camera, Pin, and favorite buttons



**S/L: Return to Previous Screen**

## Route Planning / Map Screen – cond.

- Click the “Distance” or “Time” area of the Target Road Stripe (Defined under Route Navigation Section) while the extra POI, Pin, and Favorite buttons are not on the screen to see Route Type checkbox – assuming a route is loaded
- Click “All”
- The following Route summary screen will appear



**S/L: Click to select route type**



## Quick Menu Screen

### Volume Slider

- Self explanatory

### Sliders Under “Backgrounds, Buttons”

- Adjust transparency of buttons and the background that separates them from the map

### Left Arrow

- Back to map screen

### Trip Computer Button

- Goes to Trip Computer

### Next VIA and Destination Button

- Goes to stats screen on next via point or destination when in a route
- Shows - Time, Distance Remaining, Arrival Time, Alt

**S: POI Pop-up info**  
**L: Map screen settings - pg 2**

**S: Show Car / Arrow on map while navigating**  
**L: Car Cursor Settings**

**S/L: Toll Road?**

**S: Route Vehicle Type**  
**L: Route Info - Total?**

**S: 2D/3D Toggle**  
**L: 3D Settings**

**S: Night mode**  
**L: Color profiles**

**S: Show no left turn**  
**L: Warning settings**

**S: TMC On/Off**  
**L: TMC Options**

**S: Show 2<sup>nd</sup> route movement**  
**L: General navigation settings**

**S: Show Scale**  
**L: Map screen settings pg. 1**

**S: BlueT On - or how set**  
**L: Bluetooth settings**

**S: Route Vehicle Type**  
**L: Route Info - Total?**

**Quick Menu**

**Backgrounds, Buttons**

**Trip Computer**

**Next VIA**

**Destination**

### Notes:

- If you have pedestrian set as vehicle, the car icon is a person

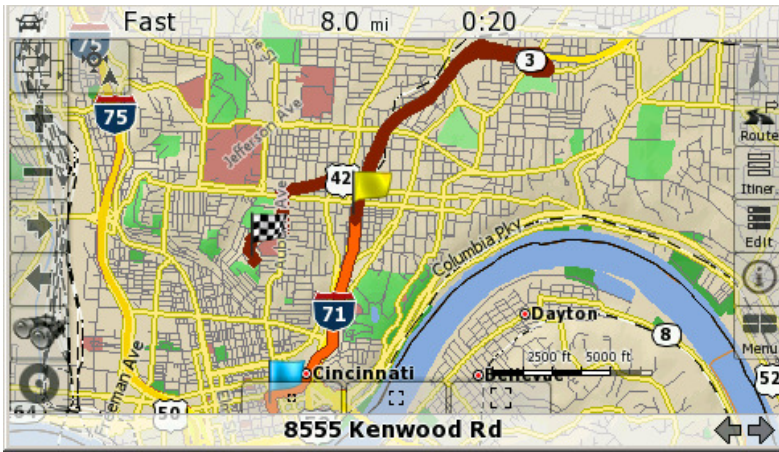
## Route Navigation Screen

- Screens shown are from route simulation. The only difference between these screens and an actual route is “FlyOver” is “Detour” button and “Stop” is “Menu” button. Simulations can be started from the Route Menu screen
- The route screen is just the cockpit screen with more information
- FlyOver starts the route simulation. You can adjust the speed of the simulation from the pop up window that appears after the simulation starts
- Buttons that are not defined in this section are the same as mentioned before
- The “Data Fields” are customizable – Long Click the “Panel Button”
  - Page 1 contains top field items, page 2 bottom field items
- To hide the data fields while navigating a route, long click any field.
  - To then edit the data fields long click “Panel”
- If you have “data fields – top” items selected for fields 3 and 4 they will not show by default on the navigation screen. If you short click either field 1 or 2, it will toggle fields 3 and 4
- Clicking on some data field objects changes them on the fly

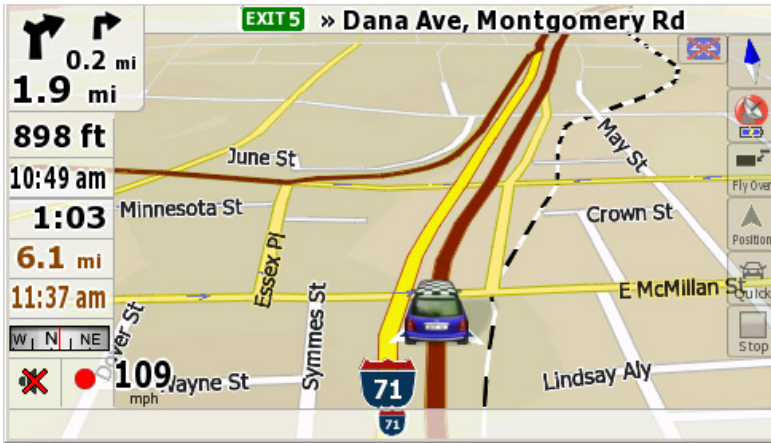


Various Screen Shots

- Daytime scheme – showing route loaded



- Daytime scheme – route navigation - showing highway exit



- Daytime scheme – route navigation - showing one interstate to the next

